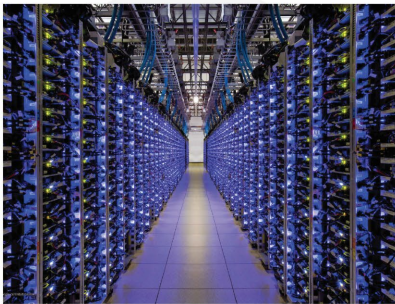


1 Headend



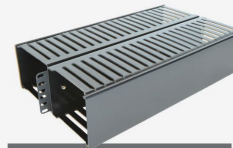
OTN Cabinets

1. Made of powder-coated aluminum
2. Standard 19" rack rail
3. Pole, wall, ground mount



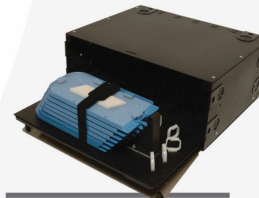
Rack Mount

1. Standardized 19" and 23" rack mount compatibility
2. Customizable Configurations
3. High fiber capacity
4. Excellent fiber management



Cable Management Ducts

1. Vertical and horizontal cable management
2. High Grade Polymer



Slide Out Splice Shelves

Accessories

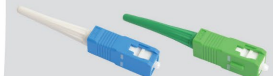


Fiber Patch Cable



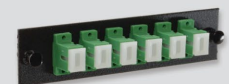
Cable Markers

1. Laser engravable
2. Avoid misidentification



Splice on Connectors

1. 900µm boot protects splice
2. Color coded 900µm buffer, boot, cleave protector and dust cap
3. Universal holders for multiple fusion splicers



Adaptor Panels

1. SC, LC, ST, FC, MTP, SC Duplex or LC Quad Connection Types

2 Outside Plant



Splice Enclosure

1. Customizable
2. Field expansion capabilities
3. High fiber capacity
4. Excellent fiber management



Sno Shoe

1. Prevents micro-bends in fiber
2. Provides consistency in fiber optic loops
3. Countersunk nut wells for easy one-tool installation
4. Cable Trough™ design



Fiber Distribution Hub

1. Dual door design
2. Easy repair or installation
3. 3-point latch mechanism



Cabinets

1. Powder-coated aluminum
2. Standard 19" rack rail
3. Pole, wall, ground mount



Big Dog

1. Maximum protection
2. Maintains operating temperatures



Power Supply Cabinets

1. Weather resistant enclosures
2. Provides regulated power

Accessories



Cable Markers

1. Laser engravable
2. Avoid misidentification



Pole Mount Slack Storage

1. Pole or wall mountable
2. Heavy-duty curved, rounded, and welded metal hooks



Pigtail Spool

1. Available in 4, 8, and 12 flat drop fiber and lengths 150 feet to 1500 feet

3 | Curb



Modular Vault

1. Strength & Durability
2. UV Stabilized Plastic
3. Security
4. Variety of Sizes

Link with the Multilink Starfighter Dome Enclosure or Optima U



Pedestal

1. DurableV protection.
2. Aesthetically Pleasing
3. Fiber Focused
4. Environment Resistant Seal
5. Universal Mounting Post
6. Security



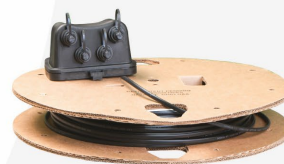
Fiber Splice Terminal

1. Fastest hookup and disconnect
2. Designed & engineered for fiber
3. For systems with non-proprietary adapters
4. For pedestals, walls or in MDU applications



Optima

1. Cost effective design
2. Re-enterable terminal
3. Separate drop and splicing compartments



Fiber Tap Plus

1. Available in 1 or 2 drop feeder ports
2. Re-enterable terminal
3. Compatible with standard hardened connectors utilized in many existing networks

Accessories



HIP

1. Cost reduction
2. Quick drop deployment
3. No special tools or technicians necessary



Field Installables

1. Pre-polished, pre-assembled connectors
2. Install within two minutes
3. Low-loss connectors



Gel Splice Kits

1. For round drop armored and non-armored, flat drop dielectric and with tone wire
2. Available for copper and coax installations



Pigtail Spool

1. Available in 4, 8, and 12 flat drop fiber and lengths 150 feet to 1500 feet

4
MDU

5
PREMISE

4 MDU



Wi-Fi Backhaul Cabinet

1. Made of powder-coated aluminum
2. Standard 19" rack rail
3. Pole, wall, ground mount



Wall Mount

1. Durable steel or aluminum
2. Security available
3. Individual compartments
4. Available with loaded termination panels and pre-connectorized pigtails



Steel Molding and Raceway Systems

1. Tuff Top Coating for Olympic Steel Molding
2. Covers up wiring or piping that runs along your exterior walls



Rough Neck Box

1. Steel with Polyester Powder Coating
2. Wall Mountable



Multi-Media Enclosures

1. Standard Frame
2. Flush Mount Frame
3. Floor Stand
4. Deep Frame (with Retro-Fit Option)

Accessories



Rack Mount

1. Standardized 19" and 23" rack mount compatibility
2. Customizable Configurations



Identification Tags

1. Laser engravable
2. Avoid misidentification
3. Virtually tamperproof



SpeedFlex™ Push Fiber

1. 1 or 2 Fiber
2. 100 Feet or 1,000 Feet



Pigtail Spool

1. Available in 4, 8, and 12 flat drop fiber and lengths 150 feet to 1500 feet

5 | Premise



Demarcation Enclosures

1. A wide variety of sizes available
2. Configure each box to meet the project's needs
3. FlexGrid™ options
4. Available with non-captive or captive entrances



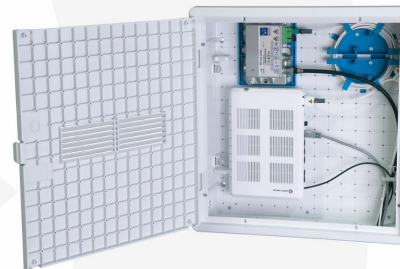
Pre-Connectorized House Fiber Drop

1. This 900um fiber
2. Protected with Speedflex
3. Equipped with an SC/APC connector on one end.
4. Available in 100, 150, 200, 250 or 300 feet



SpeedFlex™ Push Fiber

1. 1 or 2 Fiber
2. 100 Feet or 1,000 Feet
3. Available in Beige, White, Black or Orange



Multi-Media Enclosures

1. Standard Frame
2. Flush Mount Frame
3. Floor Stand
4. Deep Frame (with Retro-Fit Option)

Accessories



Identification Tags

1. Laser engravable
2. Avoid misidentification
3. Virtually tamperproof



Field Installables

1. Pre-polished, pre-assembled connectors
2. Can be installed on the job site within two minutes.
3. Highly reliable, low-loss connectors
4. Available in Singlemode and Multimode, APC and UPC, 900um, 2.0mm, and 3.0mm
5. Reusable up to 5 times